

Standard Operating Procedure for Exporting data from Lonestar

Technical POC: Max Allsworth & Russell Parris
Commercial POC: Steve Freshman
Author: Rebecca O'Donnell



Owlstone Nanotech Inc © 2012

Purpose

The main aim of this SOP is to enable any lab user working with the instrument to export the data collected in order to carry out data processing.

All data is saved on the Local C drive under Lonestar results. The exact location of the data is shown in the settings screen in the lonestar software. Shown in figure 1

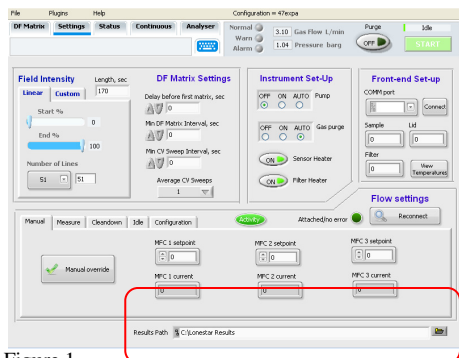


Figure 1

Method

Exporting data using a USB Pen drive

This data can be copied from the directory from where it is saved and copied onto a USB Pen drive. There are 3 USB ports on the lonestar one on the front of the lonestar underneath the power button (shown in figure 2) and two on the side of the instrument (shown in figure 3)



Figure 2



Two USB ports

Figure 3

Exporting data using a Network cable

If it is possible to connect the Lonestar to a working network the data can be stored there directly. The location of the data would have to be mapped to where you want to save the data using the setting screen in figure 1.

A network cable can be plugged into the port shown in figure 4.



Network cable