

Standard Operating Procedure for switching Lonestar On and Off

Technical POC: Max Allsworth & Russell Parris
Commercial POC: Steve Freshman
Author: Rebecca O'Donnell



Owlstone Nanotech Inc © 2012

Purpose

The main aim of this SOP is to enable any lab user to turn the Lonestar on and off, eliminating any errors and preventing any damage to the instrument.

Method

Switching Lonestar On

Before beginning to switch the Lonestar on ensure that the 12V power supply is plugged into the side of the lonestar by the carbon scrubber, and the on/off switch is turned on. This is shown in figure 1.

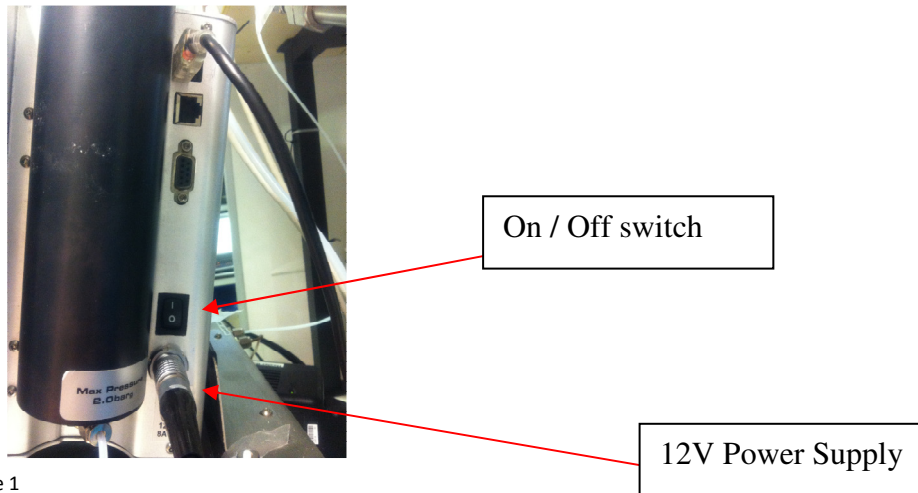


Figure 1

To turn the computer on press the round power button on the front of the Lonestar once, shown in figure 2.

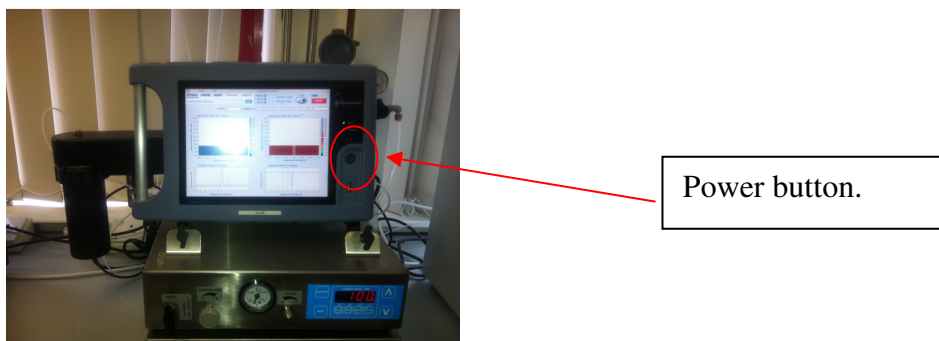


Figure 2

When this button has been pressed On the lonestar software will automatically start to load up producing the analyser screen. This may take a few minutes to complete loading.

Switching Lonestar Off

When turning the lonestar off ensure all data saved and that a clean VWR bottle is placed into the GBH.

From Analyser screen press “Advanced” tab shown in figure 3

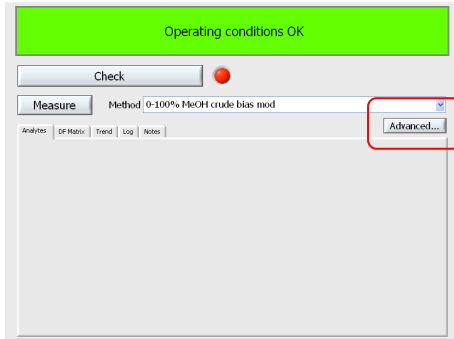


Figure 3

This will show the main Lonestar software where it can be closed by clicking “File” and “Exit” shown in figure 4 *NB if a new configuration file has been created please ensure that this has been saved before closing software down. All information will be lost otherwise.*

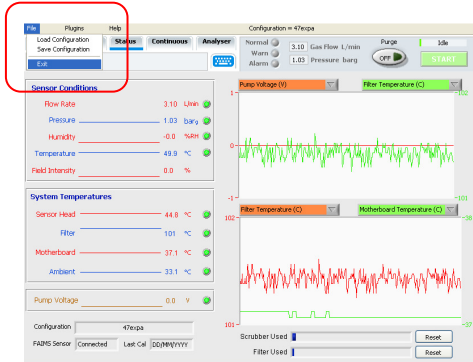


Figure 4

This will close all current software showing the normal windows screen where you can turn off the computer by clicking on the “Start” menu and “Turn off computer”.

To turn power off to the lonestar press the circular button on the front of the lonestar (Figure 2) and turning the On/Off button on the side of the lonestar shown in figure 1.

All power supply to the Lonestar will be cut off if this power supply is turned off or unplugged. Also shown in figure 1.