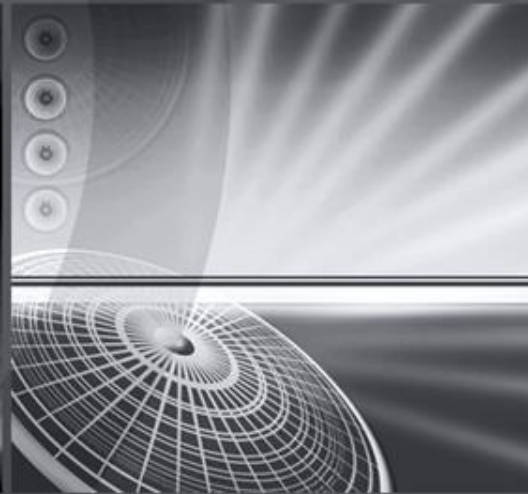


01 02 2012

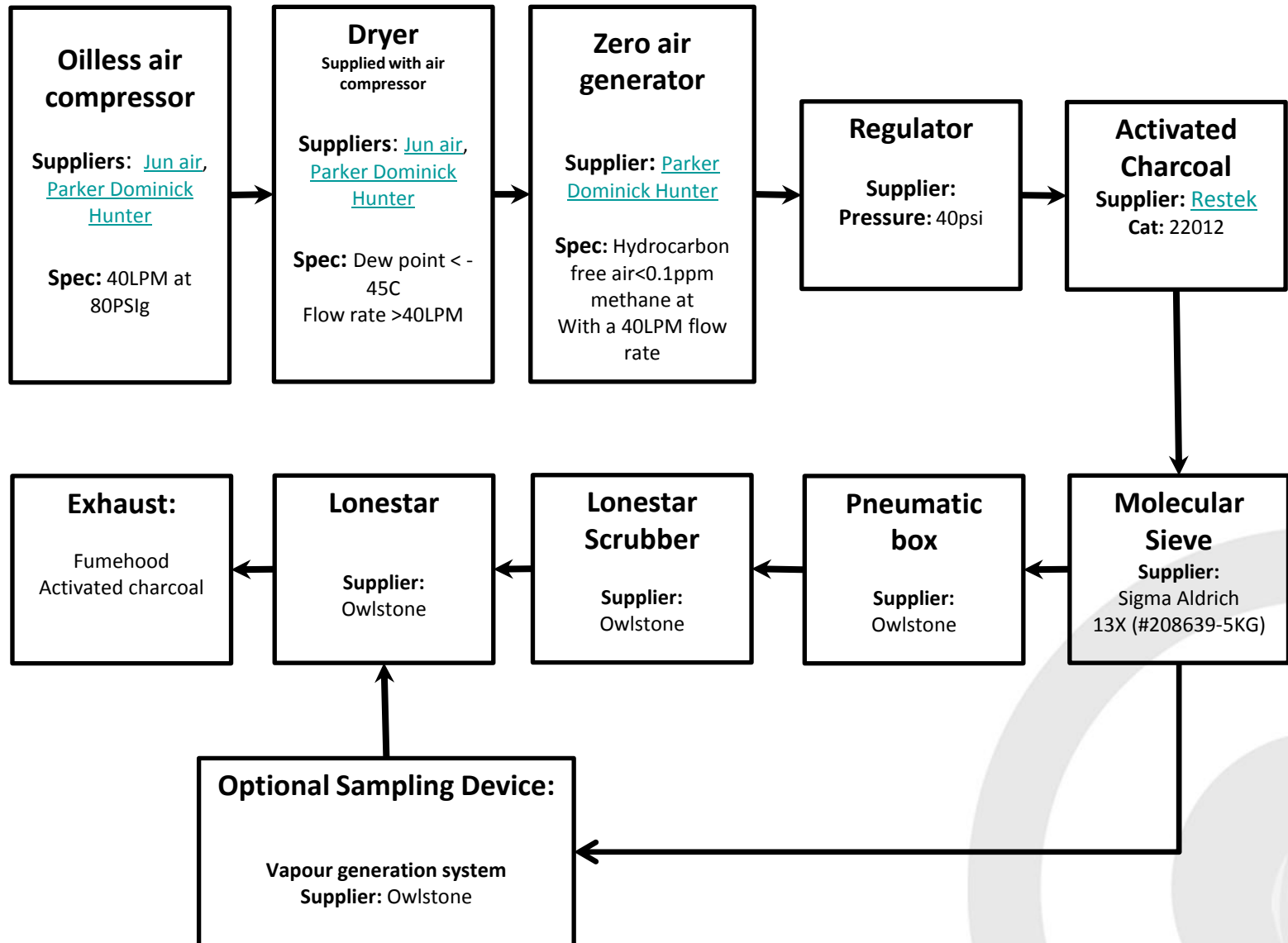
Lonestar installation gas line schematics

Russell Parris



NEXT
GENERATION
DETECTION

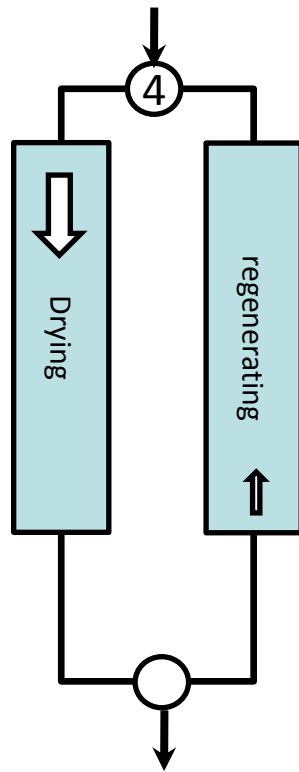
Recommended Gas line Schematic for FAIMS Installation: All gas line connections to Lonestar are 1/8" swagelok compression fittings



Info on Dryer system



Wet compressed air



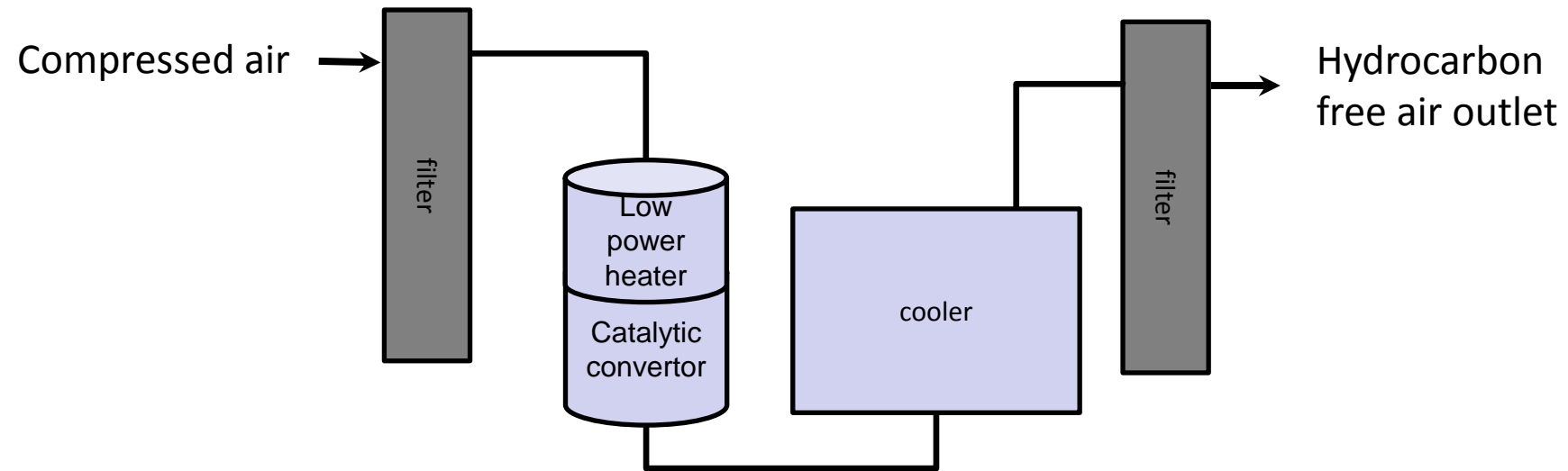
Dry air outlet

The 4 way solenoid valve allows to switch the inlet gas to one desiccant chamber at a time.

The desiccant in one of the chamber is under pressure swing adsorption: by dropping the pressure the water crashes out to be adsorbed into the desiccant.

The dry air leaving the chamber passes through a valve to provide dry air. This valve contains an aperture to allow a portion of the dry air to be re-directed back though the off-line desiccant chamber. The desiccant is then regenerated.

Info on Zero air generator



The compressed air passes through a filter to remove particulates and bulk moisture from the compressed air via an autodrain.

After passing through a low power heater the air comes into contact with the catalytic convertor. Any hydrocarbons are then combusted into trace levels of carbon dioxide and moisture.

The hydrocarbon-free air is cooled to return the air to ambient temperature and allow the outlet filter to work efficiently.